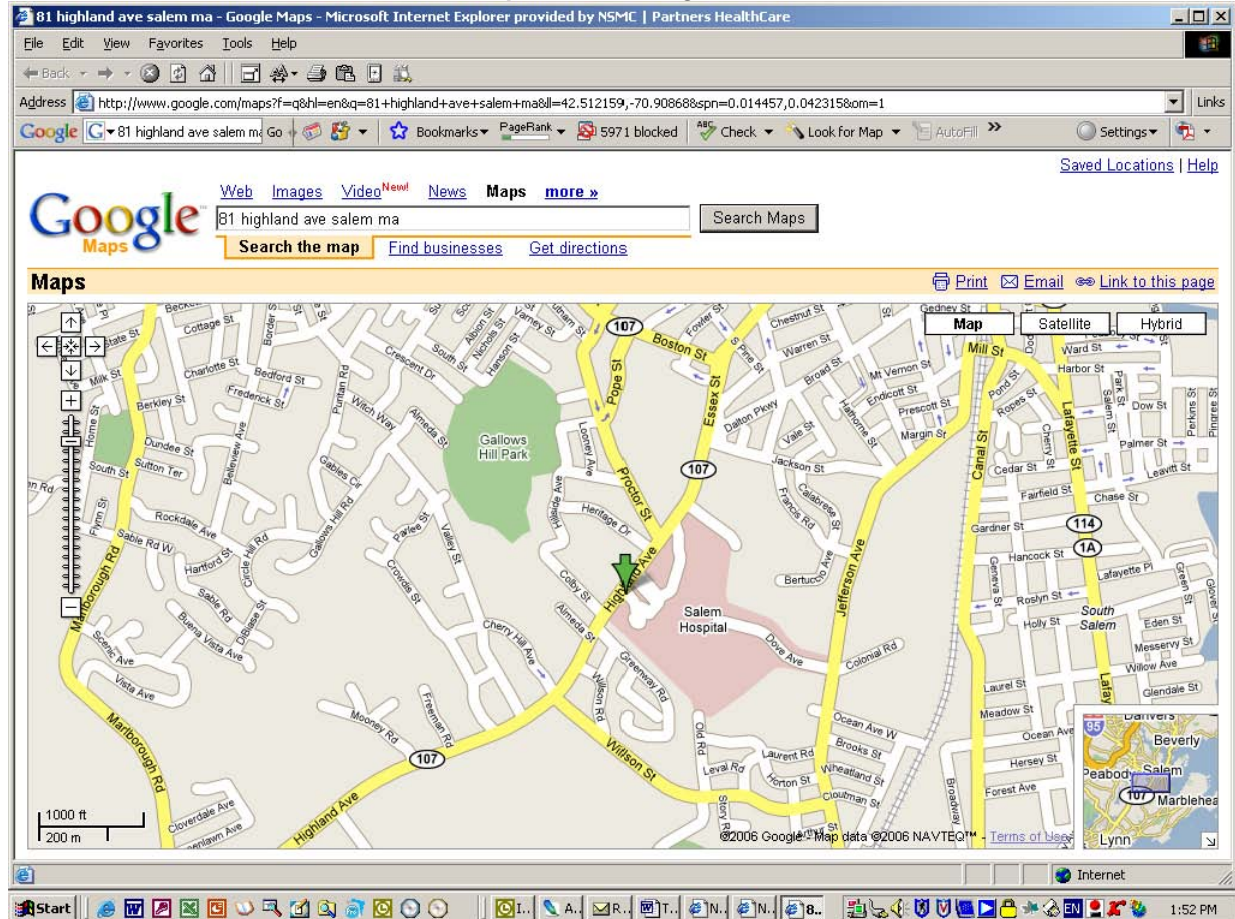


Directions for NSMC Salem, NSMC Union & NSMC No. Shore Children's Hospitals

Note: NSMC North Shore Children's Hospital is located on the NSMC Salem campus

NSMC Salem Hospital 81 Highland Avenue, Salem Main number: 978 741 1200

NSMC North Shore Children's Hospital 57 Highland Avenue, Salem



From Boston:

1. Take Route 93 North to Route 95 North to Route 128 North.
2. Take exit 26 off of 128N, and bear right onto Lowell Street.
3. Follow straight through Peabody Center. Lowell Street becomes Main Street and, after crossing the Salem city line, becomes Boston Street.
4. When the road ends, turn right onto Essex Street, which immediately becomes Highland Avenue (Route 107).
5. Approximately one city block after the first set of traffic lights, the entrance for 55 HIGHLAND AVENUE, NSMC North Shore Children's Hospital and VISITOR'S PARKING is located on your left.
6. Entrance for NSMC Salem Hospital is on the left at the second traffic light.
7. For SHAUGHNESSY-KAPLAN REHABILITATION HOSPITAL follow the first four steps above. Make a left onto Jackson Street at the first set of traffic lights. Follow Jackson Street to its end and take a right onto Jefferson Avenue. Go approximately 1/4 mile to first set of traffic lights. Turn right and follow Dove Avenue to the SHAUGHNESSY-KAPLAN entrance.

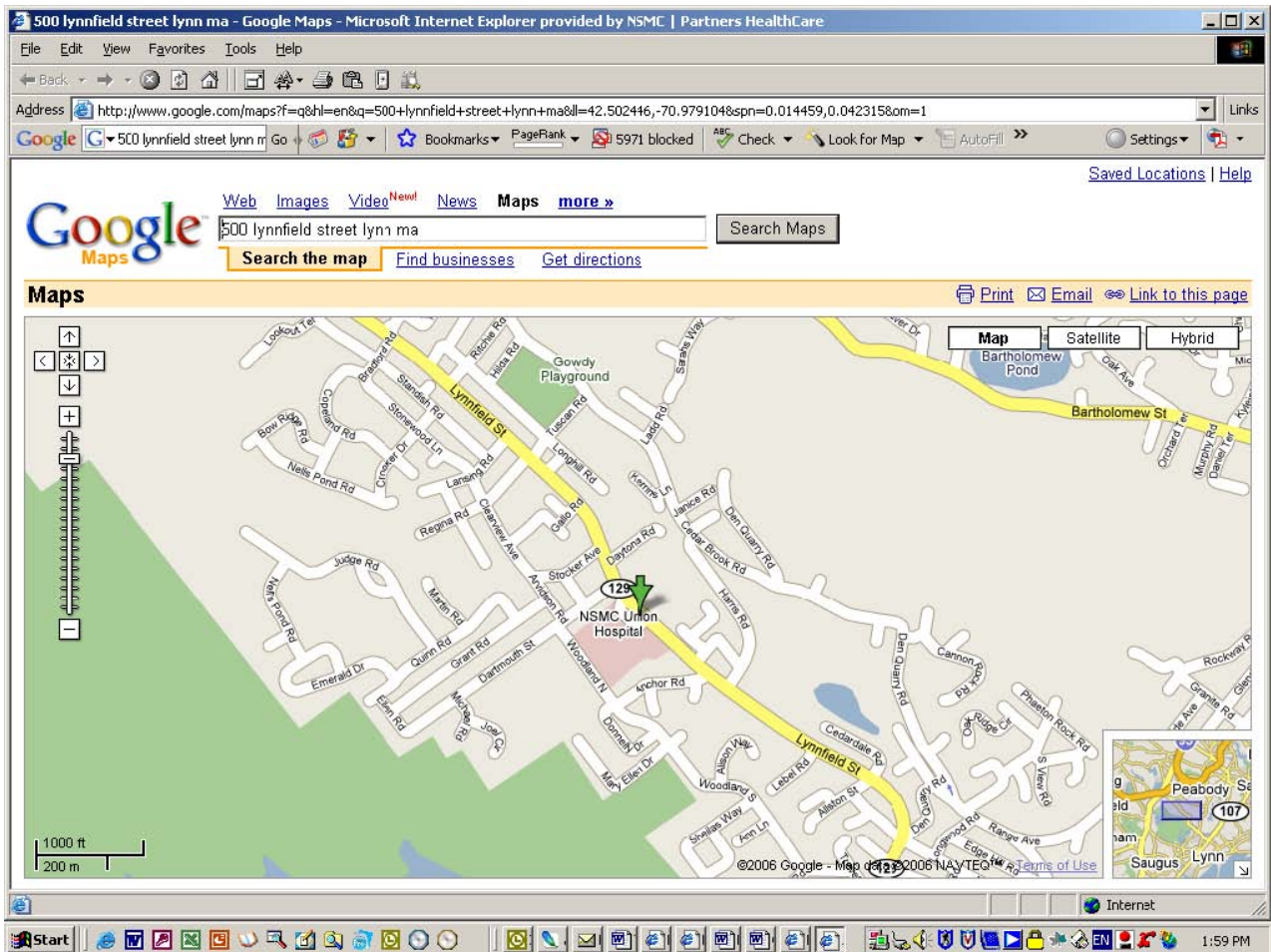
From Southern New England:

1. Take Route 95 North to Route 128 North.
2. Take exit 26 off of 128N, and bear right onto Lowell Street.
3. Follow straight through Peabody Center. Lowell Street becomes Main Street and, after crossing the Salem city line, becomes Boston Street.
4. When the road ends, turn right onto Essex Street, which immediately becomes Highland Avenue (Route 107).
5. Approximately one city block after the first set of traffic lights, the entrance for 55 HIGHLAND AVENUE, NSMC North Shore Children's Hospital and VISITOR'S PARKING is located on your left.
6. Entrance for NSMC Salem Hospital is on the left at the second traffic light.
7. For SHAUGHNESSY-KAPLAN REHABILITATION HOSPITAL follow the first four steps above. Make a left onto Jackson Street at the first set of traffic lights. Follow Jackson Street to its end and take a right onto Jefferson Avenue. Go approximately 1/4 mile to first set of traffic lights. The SHAUGHNESSY-KAPLAN entrance is on the right.

From Northern New England:

1. Take Route 95 South to Route 128 North.
2. Take exit 26 off of 128N, and bear right onto Lowell Street.
3. Follow straight through Peabody Center. Lowell Street becomes Main Street and, after crossing the Salem city line, becomes Boston Street.
4. When the road ends, turn right onto Essex Street, which immediately becomes Highland Avenue (Route 107).
5. Approximately one city block after the first set of traffic lights, the entrance for 55 HIGHLAND AVENUE, NSMC North Shore Children's Hospital and VISITOR'S PARKING is located on your left.
6. Entrance for NSMC Salem Hospital is on the left at the second traffic light.
7. For SHAUGHNESSY-KAPLAN REHABILITATION HOSPITAL follow the first four steps above. Make a left onto Jackson Street at the first set of traffic lights. Follow Jackson Street to its end and take a right onto Jefferson Avenue. Go approximately 1/4 mile to first set of traffic lights. The SHAUGHNESSY-KAPLAN entrance is on the right.

NSMC Union Hospital 500 Lynnfield Street Lynn MA 01904
Main number: 781 581 9200



From Northbound Route 128:

- Take exit 44B off of 128N
- Stay to the right following Route 129 East for Lynn/Lynnfield
- You will come to a rotary; take the second exit off of the rotary for Route 129 Lynn/Swampscott. This is also known as Lynnfield Street.
- NSMC Union Hospital is one mile ahead on the right.

From Northbound Route 1:

- Take Route 1 North to the Route 129 - Lynn, Lynnfield exit.
- Make a right onto Route 129 East following into Lynn.
- You will come to a rotary; take the first exit off of the rotary for Route 129 Lynn/Swampscott. This is also known as Lynnfield Street.
- NSMC Union Hospital is one mile ahead on the right.

From Southbound Route 128:

- Take exit 44 off of 128S
- Stay to left following signs to Route 1 South, Boston

- Once on Route 1 South, stay in the right lane and take the exit for Route 129 East - Lynn/Lynnfield
- You will come to a rotary; take the first exit off of the rotary for Route 129 Lynn/Swampscott. This is also known as Lynnfield Street.
- NSMC Union Hospital is one mile ahead on the right.

From Southbound Route 1:

- Take exit for Route 129 East - Lynn/Lynnfield
- Make a left onto Route 129 following into Lynn.
- You will come to a rotary; take the first exit off of the rotary for Route 129 Lynn/Swampscott. This is also known as Lynnfield Street.
- NSMC Union Hospital is one mile ahead on the right.